

This document will present the steps needed to Install / Un-install the drivers of MosChip PCI to Serial / Printer port products or another manufacturer's product based on MosChip MCS98XX series.

In this document, the MCS9835 is taken as an example to explain the installation process. MCS9835 offers two serial ports and one printer port.

Driver Installation:

Download the appropriate drivers from the link :

http://www.moschip.com/html/download_drivers.html. The drivers can be downloaded from the category “**PCI Connectivity**” in the download section of our website.

Allow the “.zip” file to be downloaded to your local computer. Unzip the Driver files to a directory on your PC Hard Disk, or to a Floppy Diskette.

Note : MCS98XX drivers are certified by Microsoft for Vista 32bit & Vista 64bit operating systems.

Windows Vista is the first version of Windows that is enforcing some restrictions in adding un-signed drivers to the kernel.

Installing Drivers for the first time:

Switch OFF the PC.

Insert the peripheral card into the computer.

Ensure that there are no external devices connected to the Ports at this time. They can interfere with the installation of the Drivers.

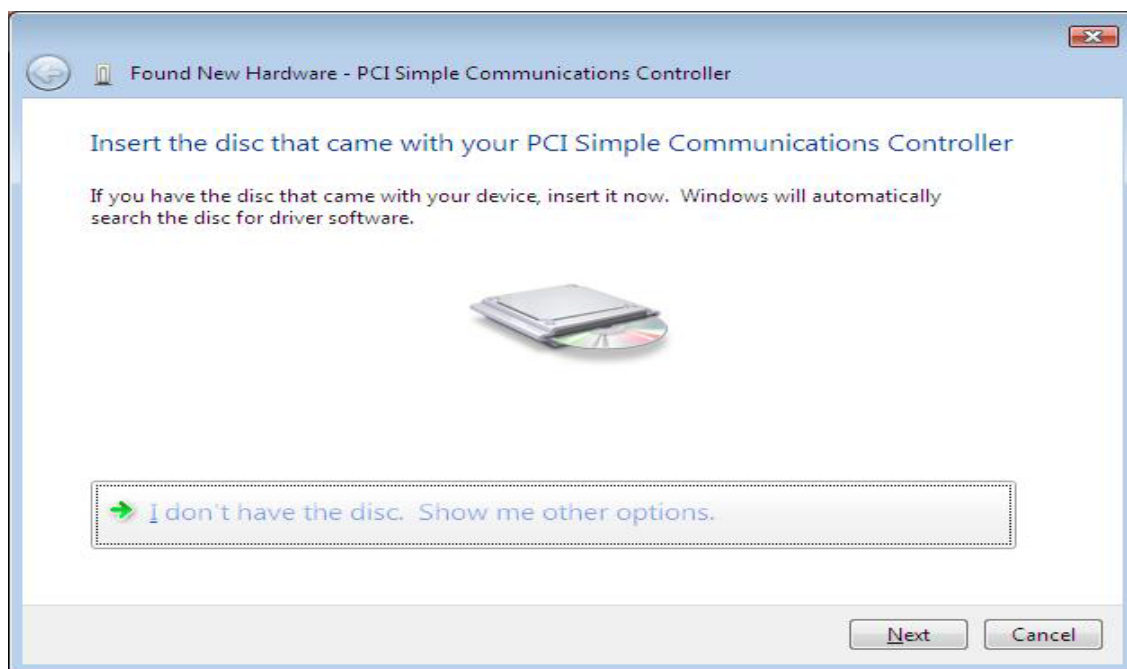
Turn ON the computer.

Windows should detect the new card, and automatically invoke the “**Found New Hardware**” wizard.

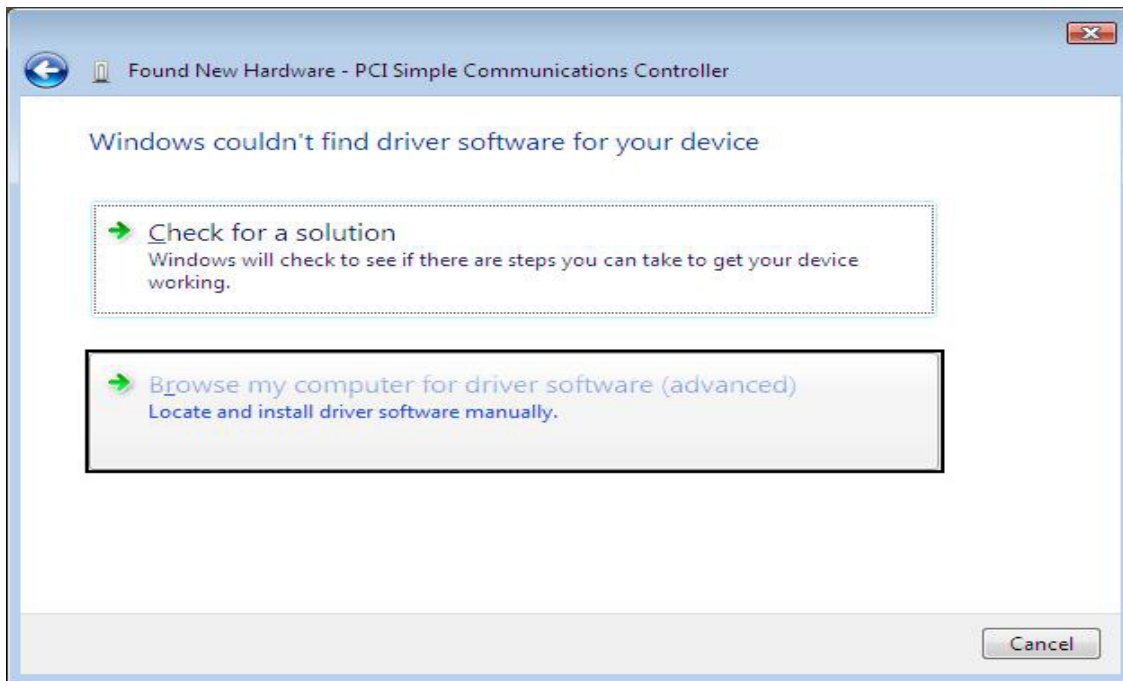
Select **“Locate and install driver software (recommended)”** to start the installation.



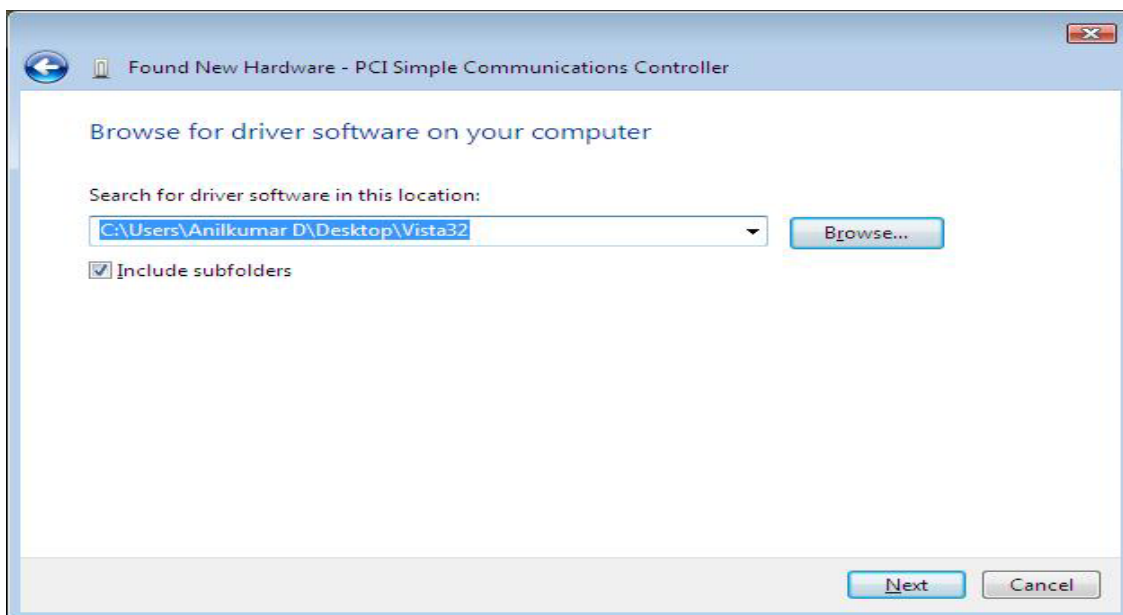
Click on **“I don't have the disc. Show me other options.”** to proceed further.



Select the option “**Browse my computer for driver software (advanced)**”.



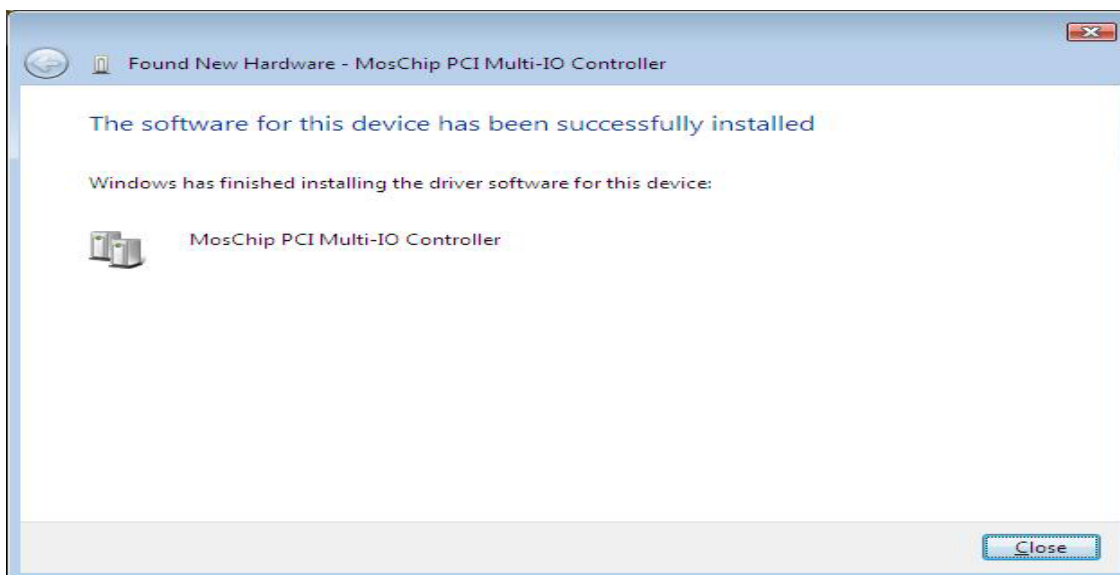
Select the location of the driver disk by using the option “**Browse**” and click on “**Next**”.



“Install this driver software anyway” to proceed with driver installation.
Following pop-up screen applies to un-signed drivers only. Hence u will not see this with Microsoft certified drivers (Signed drivers).



Click on **“Close”** to complete the driver installation.

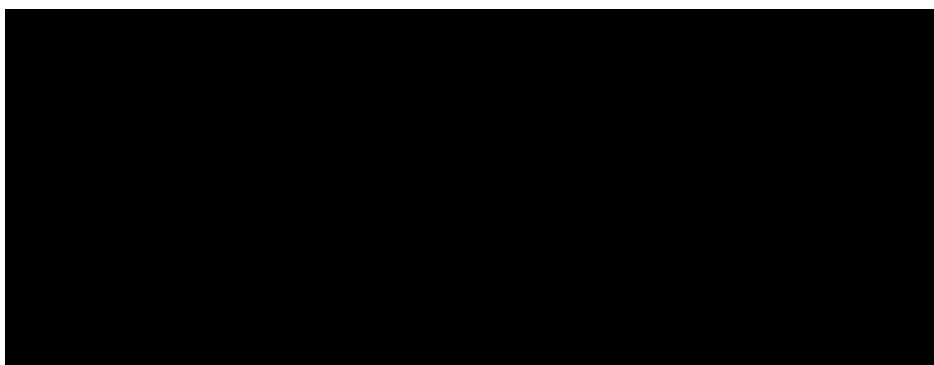


The Serial / Parallel ports of MCS98XX will automatically get detected by the OS without user intervention.

Un-Installing the drivers:

Double click on “NmUninst.exe” which pops up a Multi-I/O drivers uninstall utility as shown below.

Click on “OK” to proceed with driver Un-installation.



Upon driver un-installation, the OS prompts the user to reboot the system. Please restart the system for the changes to take effect.



Driver Installation in Windows Vista 64-bit:

Installation steps for Vista 64bit Operating system are same as that of Vista 32bit as shown above, for Signed drivers.

Preparing Vista 64-bit Operating System for installing un-signed drivers:

Steps given below are relevant for using Un-signed drivers on Vista operating system. MCS98XX drivers are certified by Microsoft (Signed drivers) hence steps below do not apply when Signed drivers are used.

- **Using the F8 option:** Press F8 key on your keyboard while booting your PC. You will get into “Advanced Boot Options”. Select “Disable Driver Signature Enforcement”.
- An F8 Advanced Boot Option introduced with Windows Vista—“Disable Driver Signature Enforcement”—is available to disable the kernel-signing enforcement only for the current boot session. This setting does not persist across boot sessions.
Note: Make sure to use F8 option every time you boot/reboot your PC before start working with MCS98XX
- Make sure that the User installing the driver must be a member of the Administrator group on the system.

You will get a “User Account Control” window saying “*An unidentified program wants access to your computer*”. Click on *Allow* to continue installing the Driver.