

CT-S2000VirtualCOM driver installation

Condition

OS: Windows2000, Windows XP or Windows 2003 Sever

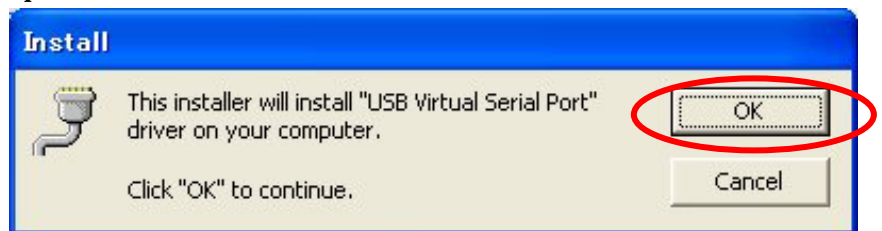
PC: USB port is available

Printer: CT-S2000 using USB port

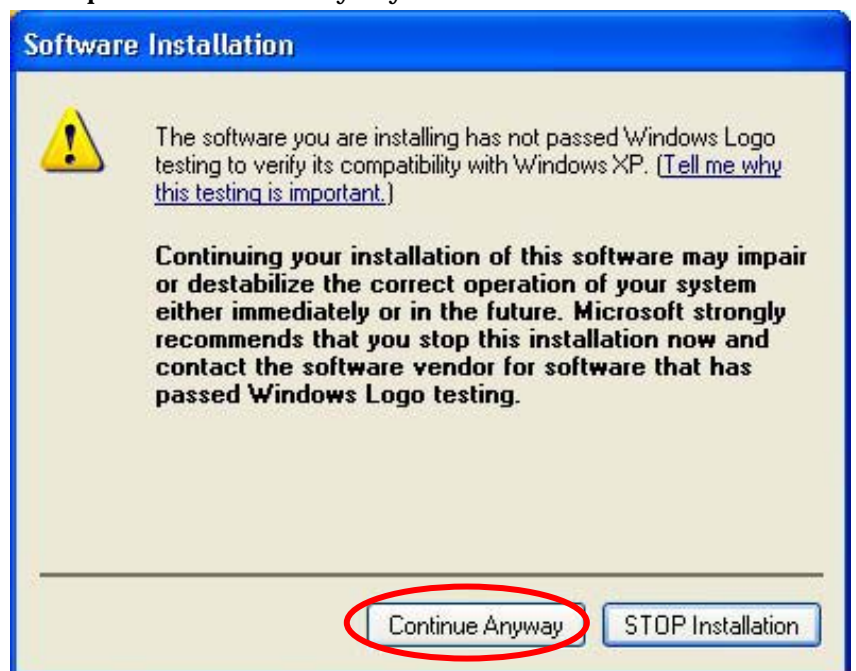
Installation steps

This explanation is based on Windows XP but the steps is almost same for other OS.

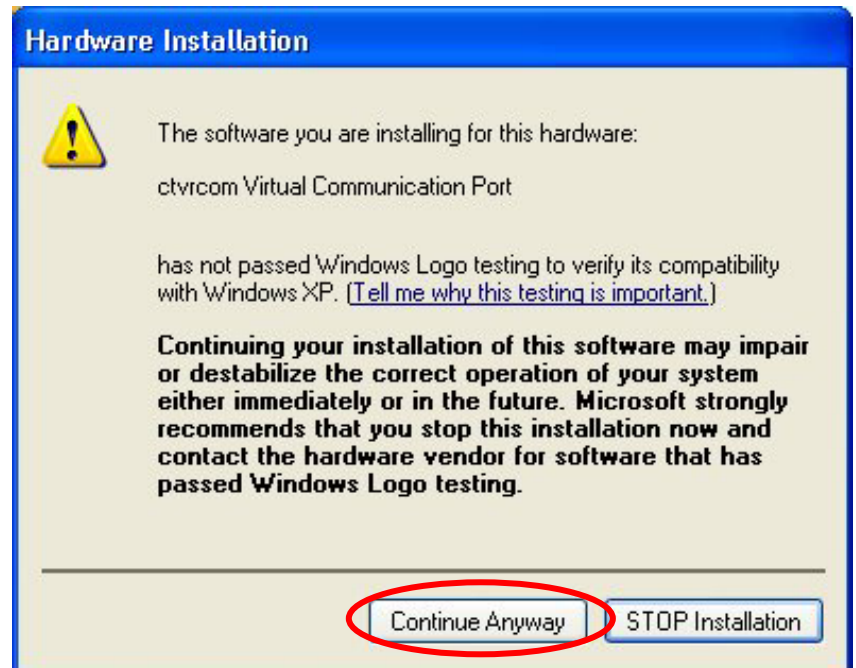
1. Please set the memory switch 4 USB mode for "V-COM"
2. Connect the PC and printer with USB cable while printer power is kept off.
3. Unzip the ZIP file (If you get the Virtual COM driver as ZIP file.)
4. Run "Setup" in the folder of driver files.
5. Following Windows shows up. Please press "OK".



6. "Software Install" window shows up. Please press "Continue Anyway".

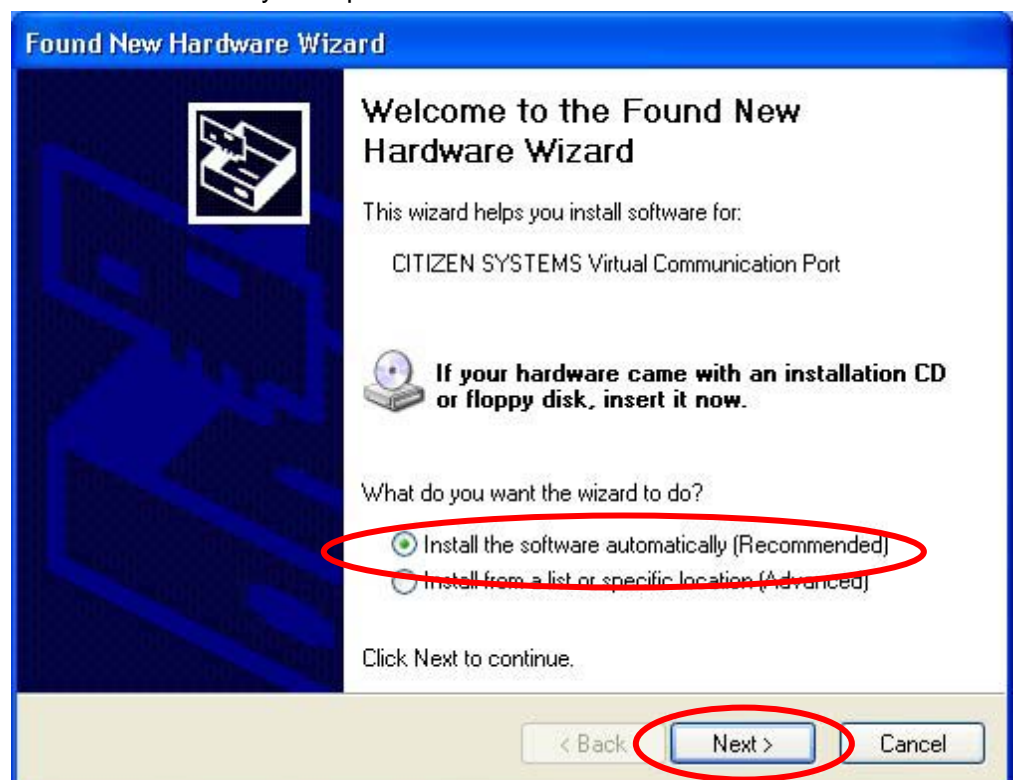


7. Then “Hardware Installation” window show up. Please press “Continue Anyway” and repeat this once more.



8. Turn the printer on. Then the Wizard below shows up.

Please choose “Install the software automatically” and press “Next”.



9. This window shows up. Please press "Continue".



10. Then driver installation is finished.

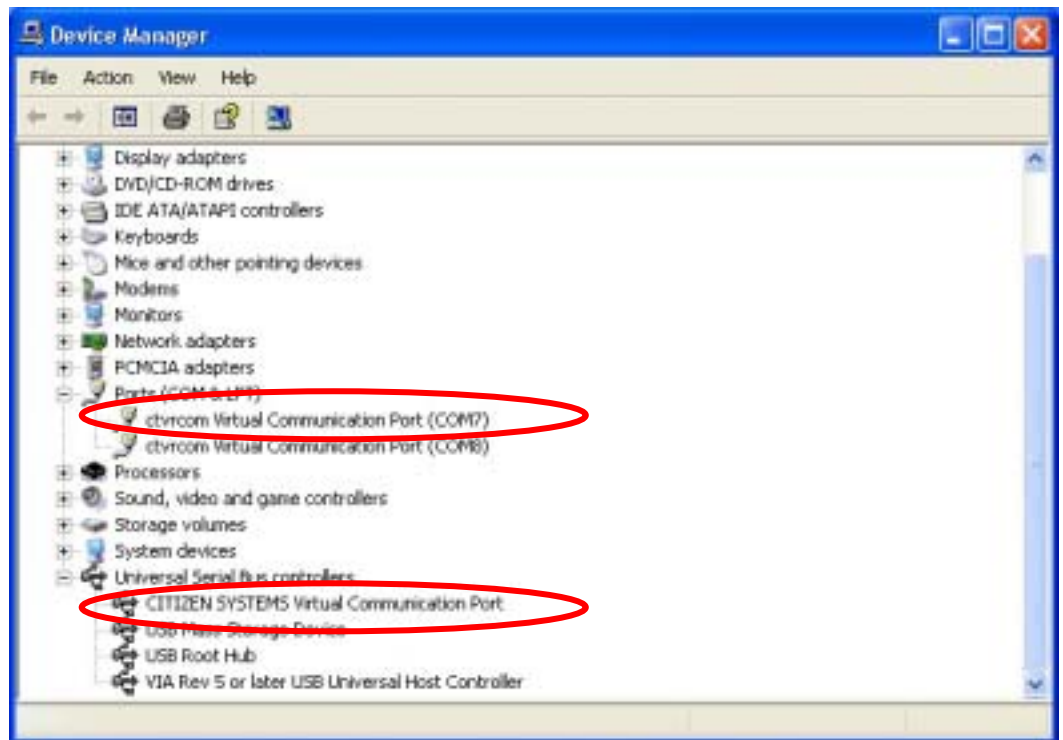
Please reboot the PC. (Recommended)



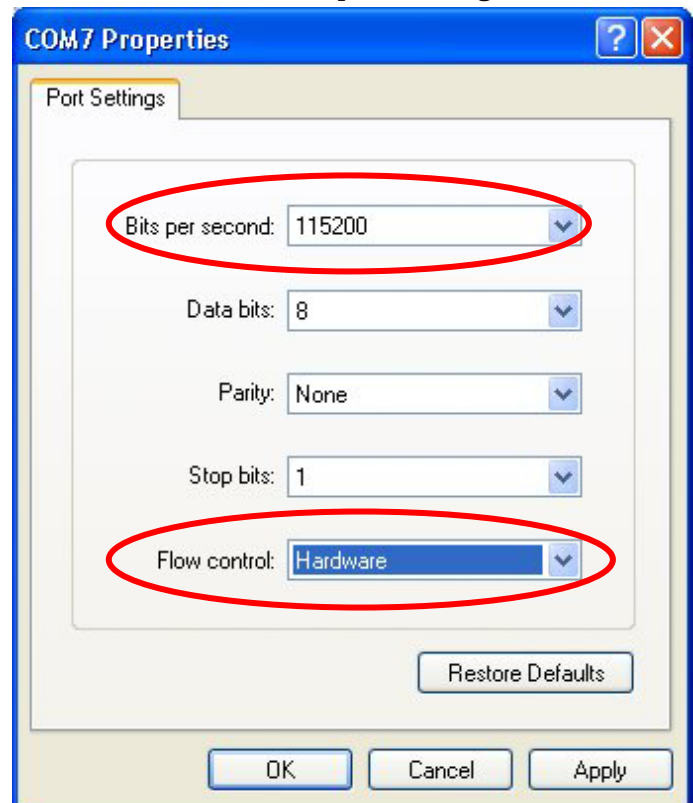
11. Then please check if the driver is installed correctly in the “Device Manager”.

A. Port is added (usually, COM7 is assigned to CT-S2000)

B. “CITIZEN SYSTEMS Virtual Communication Port” is added to USB Controller.



12. Please change the “Bits per second” to “115200” and “Flow control” of port setting to “Hardware”.
(Recommended)



13. To delete the driver, please choose “ctvrcom” in “Add or Remove Programs” and press “Change/Remove”. Then Uninstall window shows up. Please follow the instruction.

